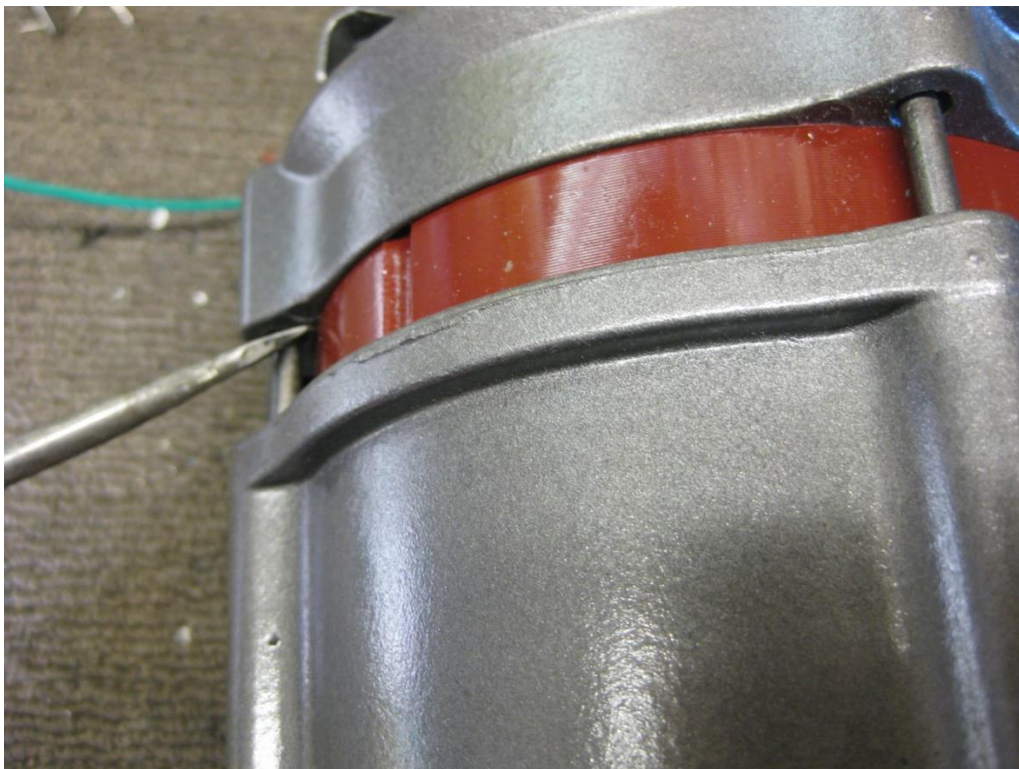
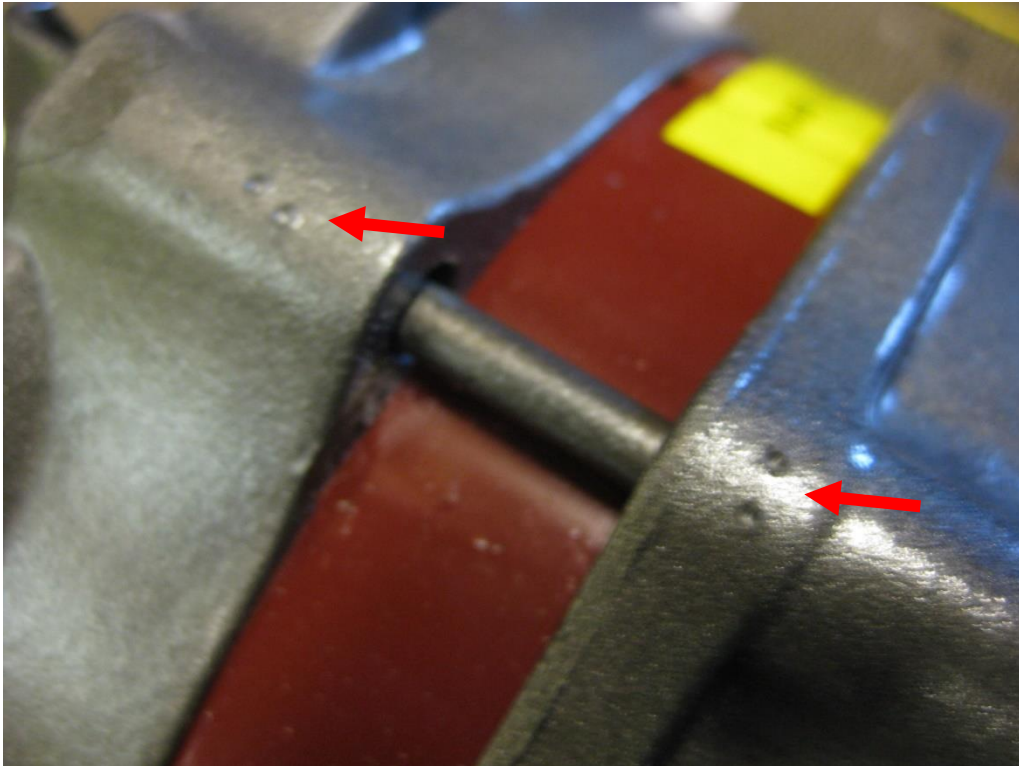


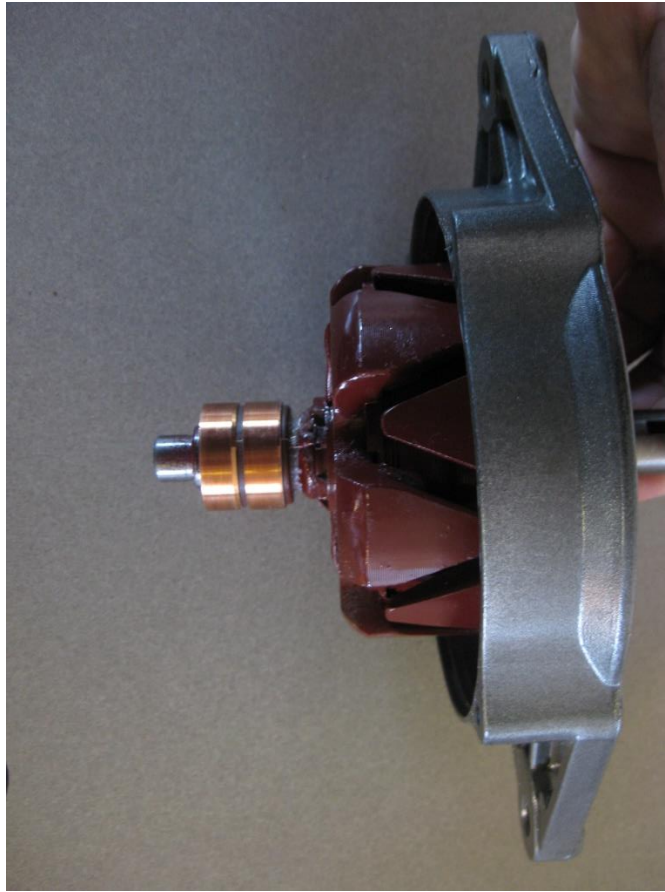
## Alternator Instructions on Splitting case halves

Remove the regulator first as when you split alternator it will smash the brushes off if you miss this step

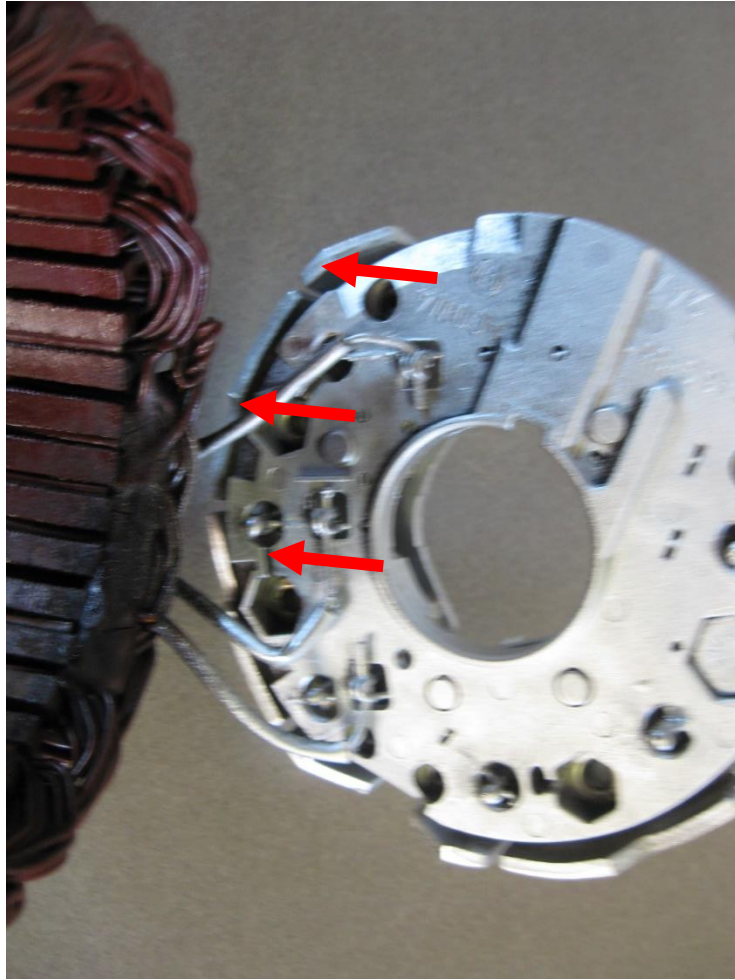
Mark the case halves in some manner to ensure the correct orientation when you re assemble. I use two pin punch marks



Use a screwdriver, one either side and coax the rear bearing out of the rear case, sometimes you might need to tap the forward case half to get a gap.



Once you split it this is the forward half complete with pulley, this picture is without a bearing as it is what I had sitting on the bench.



This is the rectifier plater and you need to desolder these three wires and solder onto the new one.