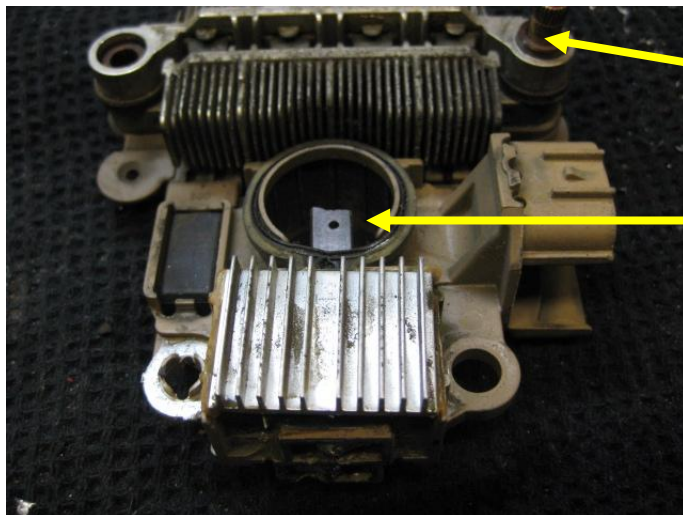


This page describes how to convert an internal regulator fitted to Mitsubishi alternators. The actual shape and plug connections differ slightly however the task is the same. For conversion to a ZM4 Smart Regulator our objective is to isolate the earth brush (rear most brush) to allow the field control to be handled by the smart regulator.

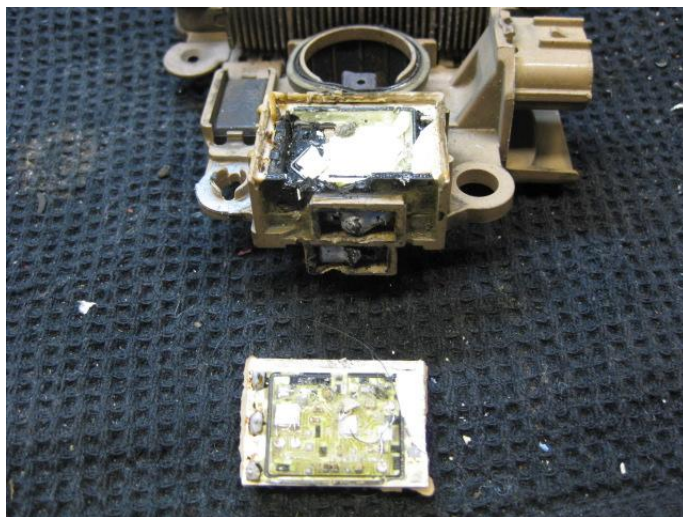
To carry out this modification the case halves need to be split.



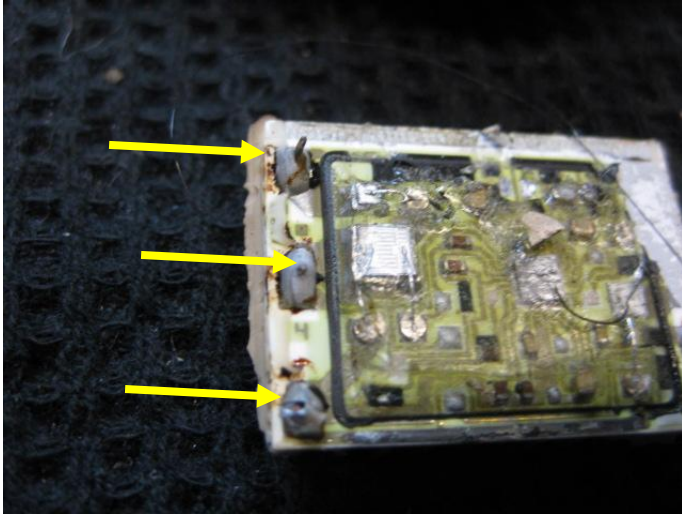
Battery Post (referred to further in)

Use a toothpick to hold brushes in when you reassemble

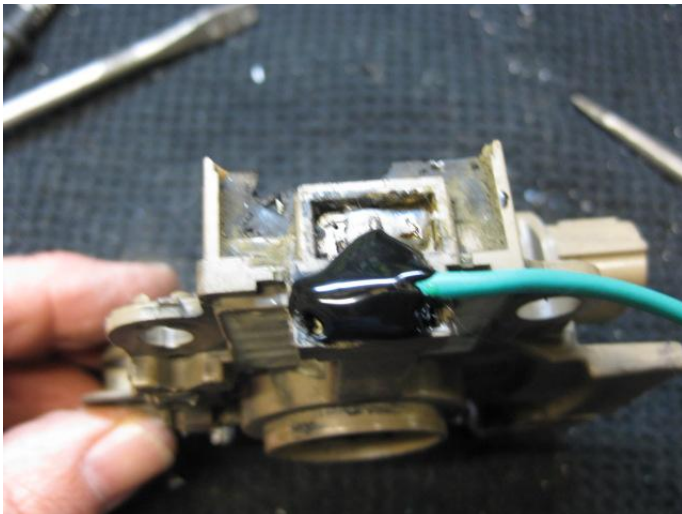
Remove rectifier and regulator section from Alternator body



Pry off internal regulator from assembly

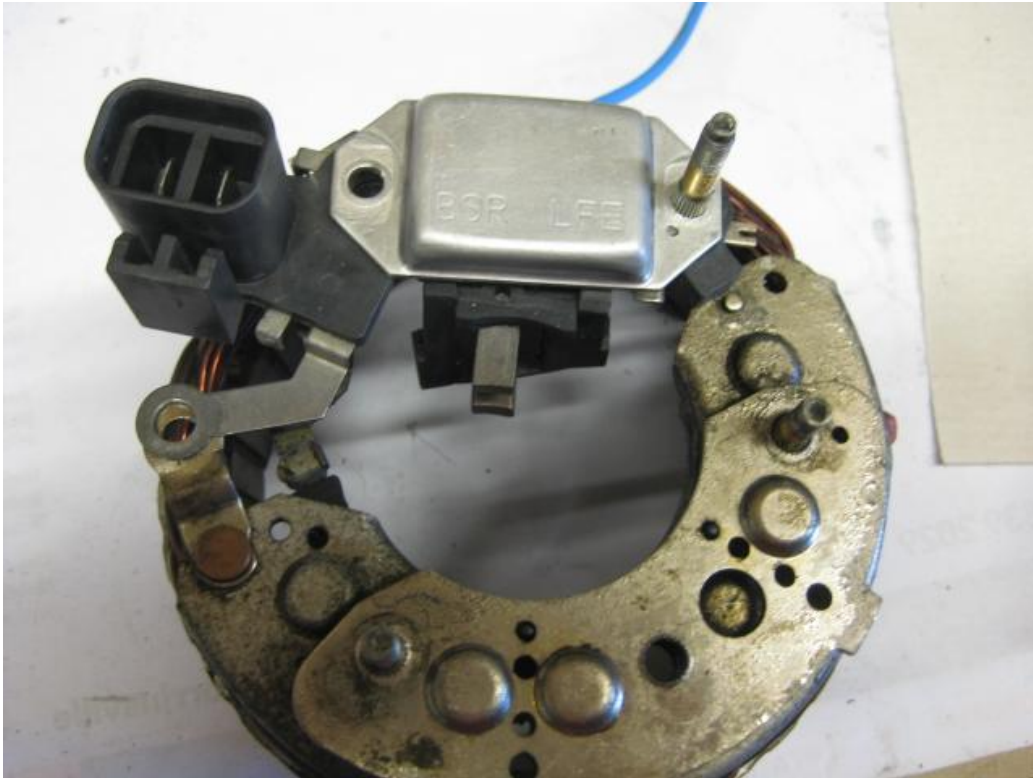


The three pins on the internal regulator is what we need to isolate, once you have cut these off you can then use a suitable adhesive to stick the assembly back on

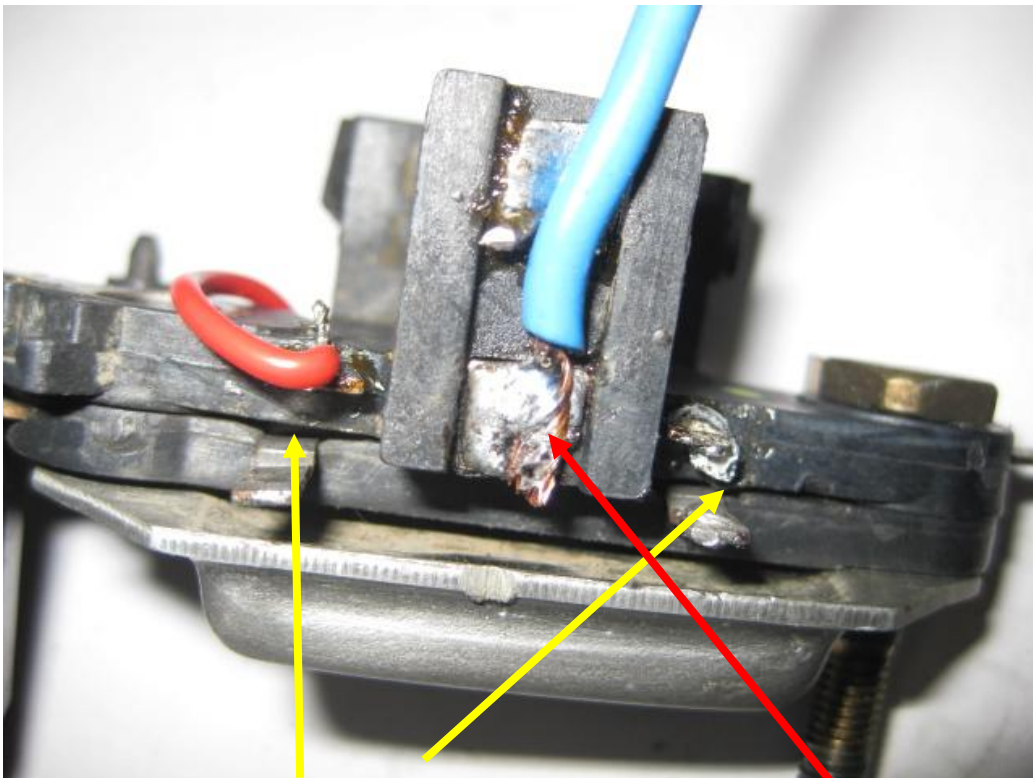


Solder a wire onto the bottom brush; the top brush will have continuity with the battery post

A different regulator combination is shown on the following pages

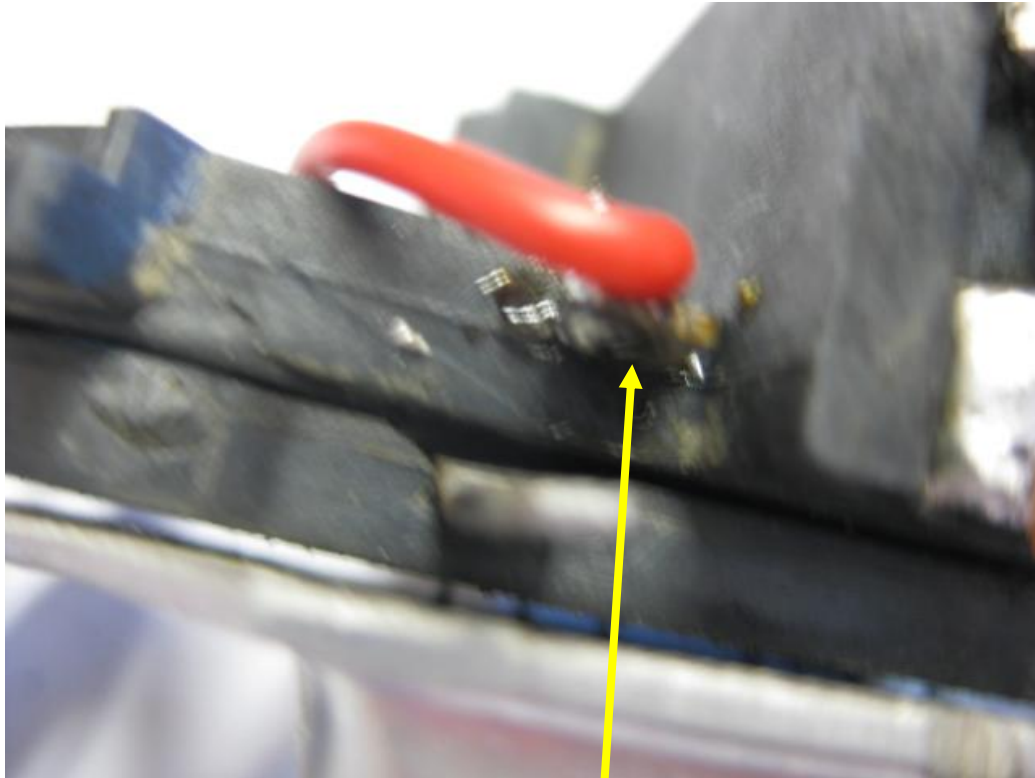


Overview of unit

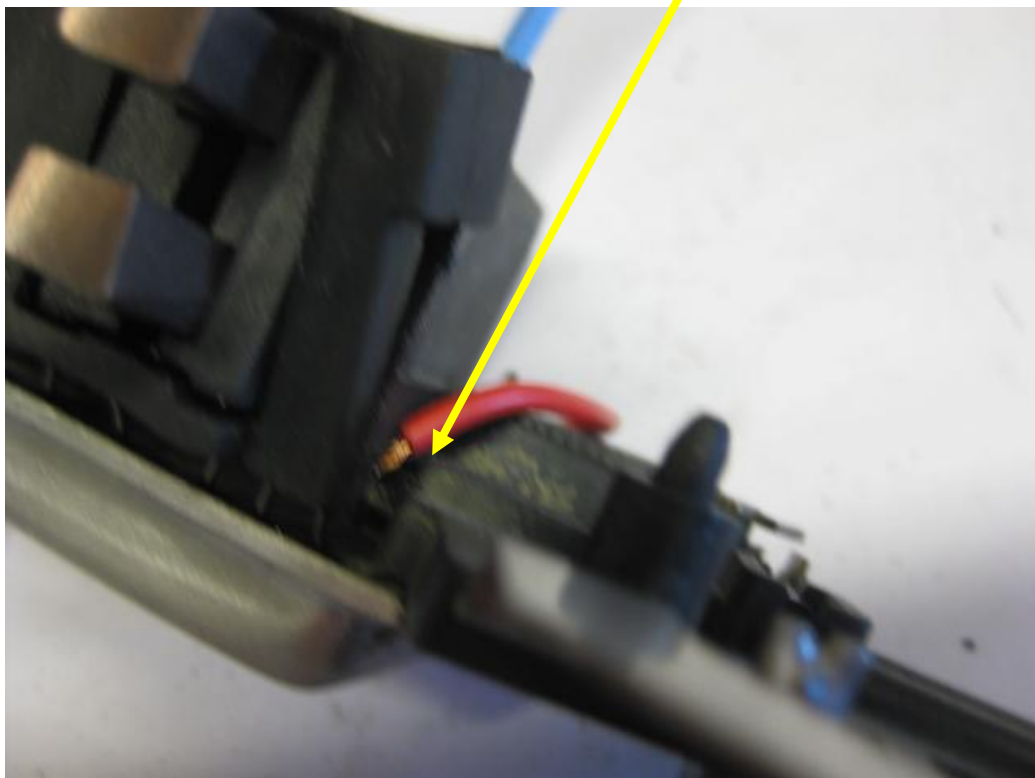


Desolder these links and separate, solder a field wire here





Solder a link wire from here to here



Jobs done, reassemble and fit alternator.